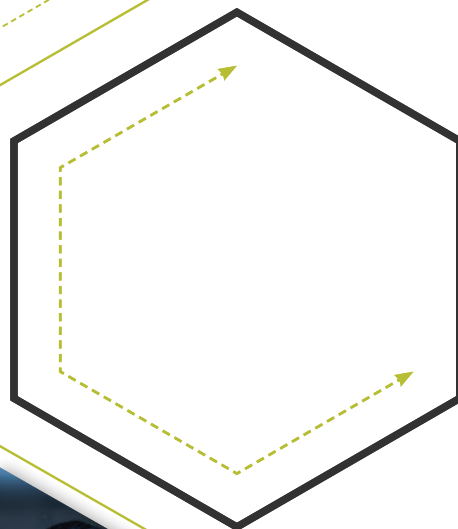


ANNUAL REPORT 2022



++

APRIL 2022-
MARCH 2023



From the CEO

This year will be a big year for BioForward!
Since coming to BioForward in 2015, I have participated in:



—and it never gets old. I wouldn't trade it for anything. If anything, it only gets better. Each year we challenge ourselves to do better, to do more, to make a bigger impact for our members, and for our state.

Last year was a busy year! Read through this report and see all the value that BioForward has been able to provide. However, I'm always looking forward. This year, now that the pandemic is finally over, I have coined it **"the year of change."** We have big plans to not only promote our industry and region and position our industry for growth but to implement substantive change that we realize needs to start with us. A few key items on the agenda:

- Collaborations among our member companies on best practices.
- Aligning our efforts with our outstanding research institutions.
- Major focus on advocacy.
- Supplier diversity— even small changes can make an impact!
- Supporting our emerging growth companies.

When I was talking to our board chair, Nicolas Paris, CEO of Gilson, he noted it is time for our industry to step up. He said that the statistics shown in our 2022 Wisconsin Biohealth Industry Landscape and Economic Impact Report demonstrate that **the Wisconsin biohealth industry is ready to move from awareness to influence.**

Are you ready?

I challenge our members to step up with me! Meet with officials. Be vocal. Join our efforts and be a part of the impact. Don't be humble mid-westerners. It is our time. The Wisconsin biohealth ecosystem is uniquely positioned in that [we have it all right here](#)

- ✓ Innovation.
- ✓ Biomanufacturing and supply chain strength.
- ✓ World-class universities.
- ✓ Investment and expansion opportunities.
- ✓ Amazing companies making a difference in the future of healthcare.

As a company in the state of Wisconsin, you are a part of something big.

Let's get loud!

Lisa Johnson
CEO





Table of Contents

From the CEO

02

BioForward's Staff and Service Providers

04

Board of Directors

05

About BioForward

06

Year At a Glance

07

Impact of WI Biohealth Industry's Growth

08

Impact of Advocacy

10

Impact of BioSavings

12

Impact of Strategy

14

Impact of Partnerships in WI Biohealth Industry

16

Impact of Talent & PR

18

Impact of DEI

19

Impact of Achievements

20

Impact of Events

21

BioForward's Medallion Members

22

BioForward's Members

23

BioForward's Staff



Lisa Johnson
CEO & Executive Committee of
Board of Directors



Corrine Fetherston
Sr. Director of Member Experience
& Operations



Michael Harrison
Director, Strategic Initiatives &
Community Engagement



Mohammed Soumaoro
Member Experience
& Program Coordinator



Maci Camara
Member Engagement Marketing
Associate



Rissa Guffey
Director of Marketing &
Communications

Julianna Mandarin
Marketing & Events
Intern
BioForward

Jordan Lamb
Legislative
Counsel
The Welch Group

Chad Rhodes
Accountant
*Figures First
Consulting*

BioForward's Service Providers

STATE ADVOCACY



LEGAL



INSURANCE



BANKING



ACCOUNTING



401K



Board of Directors

Executive Committee



Nicolas Paris
Board Chair

CEO



Garrett Peterson
Board Treasurer

Principal/CSO



Sarah Duellman
Board Secretary

Global Strategic Business
Lead, Biotech



"With the addition of Arrowhead Pharmaceuticals to our already dynamic board, we expand to represent the full slate of the Wisconsin biohealth industry. We enter 2023 with a strong plan in place for continuing to strengthen our industry, enhance its weight and impact in the Wisconsin economy and move our scope from awareness to influence at the state, national and international levels.

*Nicolas Paris, Gilson
Press release, December 21, 2022*

Board



Anjon Audhya

Sr. Associate Dean for Basic Research,
Biotechnology, and Graduate Studies



Joshua Carson

Venture Associate



Jennifer Fitzsimmons

Sr. Director, GMP
Laboratory Services



Pam Gabris

Head Dev. Strat. & Study Management;
Early Dev. Safety Assessment



Jessica Giffey

GM, SHINE Systems &
Manufacturing Div.



Haiying Grunenwald

Sr. Director, Scientific
Research



Cecilia Hillard

Associate Dean for
Research



Justin Krause

VP, Operations,
Coordination & Strategy



Adam Kujath

VP, General Manager



Edward Ladwig

GM & VP, Chemistry
Operations



Leslie Lemke-Boutcher

VP, Nonclinical
Toxicology



Thomas Lynch

VP, Client Services



Brad Pietz

Executive VP & CLO



Eric Ruedinger

Global GM for Anesthesia &
Respiratory Care



Zachary Taylor

Sr. Director,
Operations



About BioForward

Mission: To grow Wisconsin biohealth companies and unite the industry to define and influence the future of healthcare.

THE COLLECTIVE VOICE OF WISCONSIN'S ROBUST AND COMPREHENSIVE BIOHEALTH CLUSTER
REPRESENTING 225+ MEMBER ORGANIZATIONS

research institutions | biotech & biopharma | digital health | medical device & diagnostics | healthcare systems

Goal 1

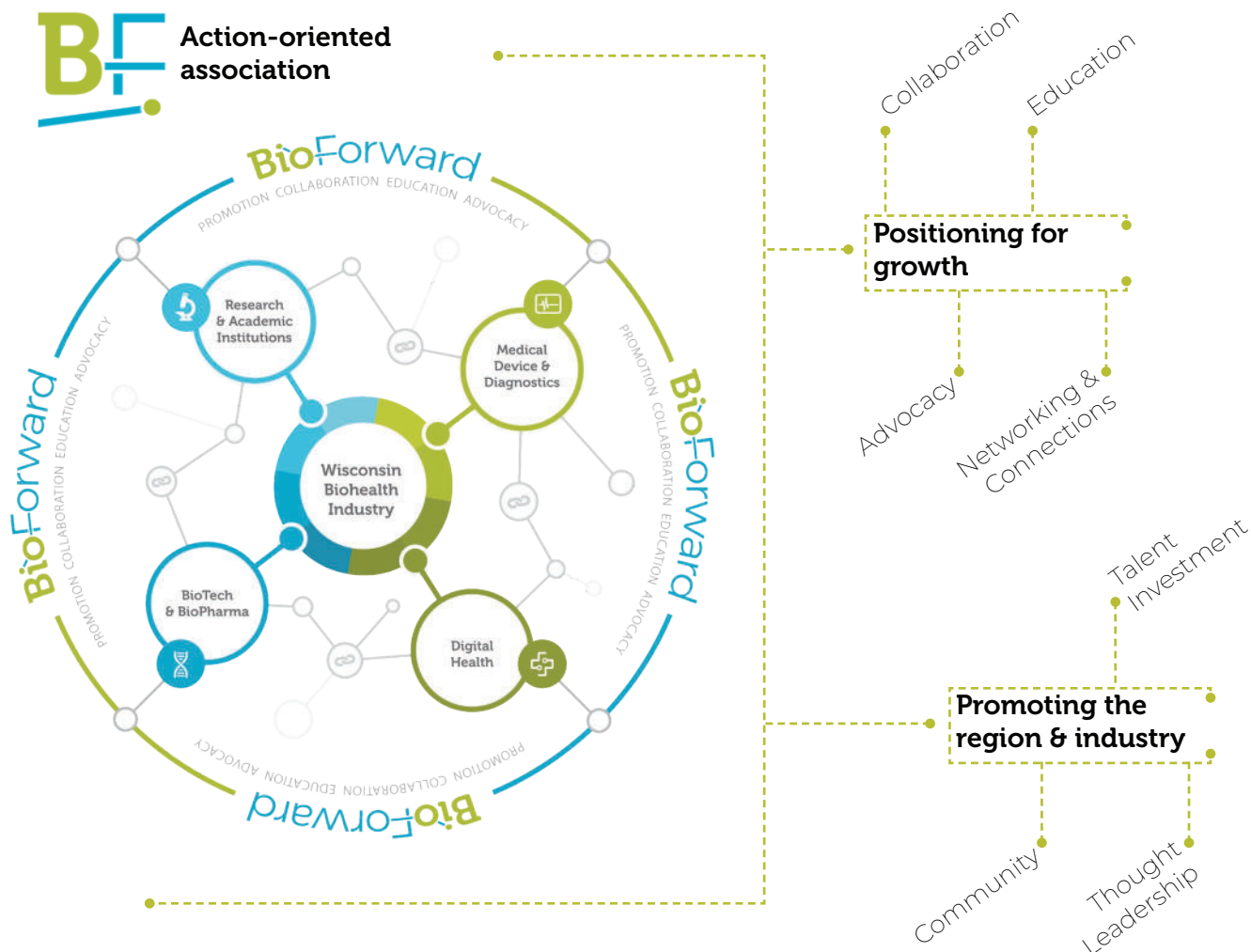
Deliver immediate and long-term value to biohealth and associate industry organizations

Goal 2

Position Wisconsin's biohealth cluster for long-term, sustainable growth

Goal 3

Promote the region and the strength of the biohealth cluster on a local, regional, national, and international stage



Year At A Glance

Completed
and distributed
Wisconsin Biohealth
Industry Landscape
and Economic
Impact Report



>\$40M
saved by members
through the
BioSavings Program



Wisconsin Biohealth
Industry Landscape and Economic Impact Report
OCTOBER 2021

44

stories published
locally & nationally
for our members

11M

digital impressions
on talent campaign
& awareness ads

16

member profiles &
blogs published

Welcomed
Maci Camara to
BioForward's full-
time staff



Advocated
on behalf on the
industry and
member companies
locally & nation-wide



3



Refocused
Michael Harrison's
position on strategic
initiatives to provide
even more value to
members



>\$22K
given by BioForward
on behalf of members
through donations &
sponsorships

\$34K

awarded in grants to
entrepreneurs in
partnership with
WEDC

5

awards for scientific
and business
achievement
distributed



1900
event attendees



295

virtual career fair
attendees



photos- 1) Eurofins lab building interior, photo courtesy of Eurofins, 2) Clinician observing GE HealthCare's Mural virtual care solution, photo credit GE HealthCare, 3) Gilson's PIPETMAX® Automated Pipetting System, photo courtesy of Gilson, 4) GE HealthCare employee manufactures a CT scanner in Waukesha, photo credit GE HealthCare, 5) Eurofins building exterior, photo courtesy of Eurofins, 6) SHINE Technologies employee pipetting lutetium-177, photo courtesy of SHINE

Impact of WI Biohealth

Every two years BioForward invests in an economic impact study to analyze the current Wisconsin biohealth ecosystem. Data from this report is essential to BioForward and its member companies in attracting and retaining talent, as well as an important tool for educating investors and legislators on the value of the biohealth industry.

The impact of the biohealth industry on the Wisconsin economy is significant. The growth, innovation and high wages contribute \$32 B to the state economy. The biohealth industry is responsible for the highest job growth in the state, 10.6%. Not only does our industry support over 129,000 jobs in WI, but each biohealth job creates and supports an additional 1.5 WI jobs. We've created multiple targeted resources with key findings that will help your company effectively communicate the influence of the biohealth industry. They can be found on our website, www.bioforward.org.

Wisconsin: We Have It **All** Right Here

Innovation lives in Wisconsin, from research to commercialization enabling companies based here to grow. Supported by a robust local supply chain and a highly talented workforce, the biohealth industry is thriving and impacting human health on a global scale.

**Biomanufacturing
and Supply Chain
Strength**

**World-Class
Universities**

**Investment
and Expansion
Opportunities**



MADE IN WISCONSIN
Supplied \$6 billion
in products and
services accounting
for 34,000 jobs
[READ THE REPORT](#)

**BIOHEALTH:
WISCONSIN'S
JOB GROWTH
LEADER**
Grew by 10.6% in 2022
[READ THE REPORT](#)



BioForward worked with Chartwell Agency to create assets for different audiences including policymakers, and companies, as well as social media.

**NEW Medallion Member
Benefit- Workforce &
Supply Chain Analysis!**

Nearly 2x the state average salary

\$96K

Leading the state in job growth

10.6%

Biohealth's growth generated

\$32B

in statewide economic impact

Industry's Growth



View the Report

"When you fuel innovation, you fuel the strength of the entire biohealth network. Wisconsin's investments in its university system deliver groundbreaking research and development and robust talent pipelines, major drivers for GE HealthCare's continued growth here."

*Eric Ruedinger, Global GM for Anesthesia & Respiratory Care
GE HealthCare*

Companies are **Investing,** **Expanding & Innovating** in Wisconsin



Arrowhead Pharmaceuticals \$200M Expansion Project

"Wisconsin has been recognized as a powerhouse not just for discovering the latest advances in biopharmaceutical research and development but in manufacturing and producing these lifesaving treatments as well."

*Tony Evers, Governor
State of Wisconsin*

129K

Jobs

For every biohealth job

1.5

additional jobs are created

\$6B

In Products & Services

Impact of Advocacy

Advocacy Directive: BioForward provides proactive advocacy as Wisconsin's independent voice that highlights the economic and social impact of our industry and supports its continued growth. We work actively to shape state, federal, and local policies and amplify the voices of Wisconsin's biohealth industry leaders and our state's research universities.

"BioForward Wisconsin's mission is a leading force in our advocacy efforts. As an organization, we believe that improving and saving lives is neither a partisan nor a local issue. We work within the entire political spectrum to serve the industry, and champion parties and policies that support patients and technologies that save lives."

Lisa Johnson, CEO, BioForward

BIOFORWARD'S ADVOCACY PILLARS



TOP ADVOCACY PRIORITIES 2022-2023

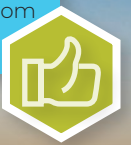
SUPPORT: All Co-pays Count Legislation

This legislation requires health insurance policies that offer prescription drug benefits, self-insured health plans, and pharmacy benefit managers acting on behalf of policies or plans to apply amounts paid by or on behalf of a person covered under the policy or plan for prescription drugs to any calculation of an out-of-pocket maximum amount or to any cost-sharing requirement of the policy or plan in Wisconsin.



SUPPORT: SBIR/STTR Reauthorization

SBIR and STTR programs were set to expire on September 30, 2022. SBIR and STTR are an essential part of America's innovative high-tech ecosystem. Any disruption to this system would have had a severe effect on R&D-focused small businesses. BioForward supported both AdvaMed and BIO's legislative advocacy to achieve the reauthorization of these vital programs. Wisconsin's stats: Over \$114,000,000 in SBIR/STTR grants from 2017—2021.



SUPPORT: Complete Repeal of the Personal Property Tax

Will provide more than \$200 million in tax relief for Wisconsin businesses. This will allow biohealth companies to reinvest these tax savings back into their companies.



SUPPORT: Increase Funding to the UW System including-

Funding for the UW-Madison College of Engineering Building Project. Funding for Phase II of the University of Wisconsin-Eau Claire Science and Health Sciences Building to ensure that UW-EC continues its traditions as a national leader in undergraduate research. It will be a catalyst for talent and workforce development for northwest Wisconsin.



SUPPORT: Restoring Federal Deduction for R&D Expenditures

BioForward once again supports restoring the longstanding deduction for R&D expenditures which was changed in 2022 to a mandatory five-year amortization for domestic R&D. This greatly impacts emerging growth companies that depend on expensing the R&D expenditure in the year incurred.



SUPPORT: Increase in State Refundable Research Tax Credit

BioForward is a coalition member working to increase the Wisconsin Refundable Research Credit from 15% to a higher limit. More details to be provided as updates occur through the state budget process.



Impact of BioSavings

BioForward has partnered with Fisher Scientific on the BioSavings program. The collective purchasing power of our members enables significant savings on lab supplies and equipment. These benefits are available to all members who join the Fisher BioSavings program.

BioForward
WISCONSIN

&

fisher scientific
part of Thermo Fisher Scientific

=

++

value for
members



Discounts

- 55% average off list price
- additional discount on items ordered the most



Credits

- annual credit for year-over-year growth
- annual credit for ordering online
- quarterly credit on purchases



Shipping

- free standard shipping

>\$40M

Saved by the 60 BioForward member-companies participating in the BioSavings Program!

Kim Newman, Sr. Manager, Sourcing & Supplier Management, Arrowhead Pharmaceuticals

Arrowhead Pharmaceuticals is proud to partner with BioForward and Fisher Scientific to secure competitive pricing and discounts for our Wisconsin-based research and development facility as we focus on developing medicines that treat intractable diseases by silencing the genes that cause them.

Mike Hendrickson, Director of Operations, BrainXell

Controlling costs as a small biotech company is essential, and BrainXell has utilized the BioSavings program for several years to this end. Our negotiating power can be limited because of our size, so getting fixed discounted prices is advantageous. It also minimizes the need to constantly ask for discounted pricing or a quote for every purchase. Overall, it's been a key tool for our growth as a company.

Dawn Swenson, Manager, Warehouse, Aldevron

Being a part of BioForward has several benefits. Purchasing from Fisher Scientific, not only do we get discounted pricing on everything because they are in the BioForward program, but we also get rebates for every item purchased, growth and free shipping! BioForward works closely with Fisher to ensure we get the best customer service possible.

Fisher Scientific has been BioForward's trusted partner for over a decade!



Did you know?

As a nonprofit, any financial incentives BioForward receives from vendors like Fisher Scientific, are reinvested into our members by keeping the cost of membership low and supporting initiatives like the talent and public relations campaigns.

Craig L. Bald, Sr. Director, Global Procurement, Promega

Fisher is a key supplier to Promega, and Promega has a deep partnership with BioForward. The BioSavings program has been very valuable for both Promega and the BioForward community.

Benacer Douadi, Lead Scientist & Technical Expert, AHP Health Innovation

Great people (Brad Tuomi), great products and great company. I am very satisfied with their quality of service and product.

BioForward's membership in the **Biotechnology Innovation Organization** (BIO), enables all BioForward members to take advantage of discounts offered by these vendors through BIO's Business Solutions program.



Additionally, some of BioForward's Associate Industry members offer special deals to members to provide more value!



Impact of Strategy

BioForward may be the voice of Wisconsin's Biohealth industry, but we are also listening. Our members are the true leaders of biohealth, so when they have ideas, concerns, or a passion to make a change... we take action. BioForward has several strategic initiatives that cover a wide range of important topics that will have an impact on our industry today and in the future. These initiatives tend to be member-driven and rely on the collaboration of our members and partners. Here are some examples of the action being taken by BioForward and our membership to grow and support our industry with talent, innovation, and improvement.

Remember: if you have an idea for an important project that needs support, please let BioForward know.



Contact Us

STRATEGIC INITIATIVES:

- **Environmental, Health, and Safety Working Group** – The EHS Working Group was formed by employees at Promega and Illumina interested in collaborating across the industry on strategies and best practices for improving the health and safety of their employees and Wisconsin. Discussions, networking, and events are all forthcoming from this enthusiastic group.

illumina®



- **Theranostics/Medical Physics Working Group** – Wisconsin has a phenomenal strength in medical technologies based on imaging and related therapies. With leadership from GE Healthcare, this group is just getting started and already has a lofty goal of defining and promoting a Wisconsin Medtech Hub.



ACCURAY

SHINE



- **Supply Chain Diversity Initiative** – We know that diversity is a key concern for many of our members. To compete on the global stage companies are increasingly required to document diversity within their organization and the partners with which they choose to work. BioForward is collaborating with multiple experts in the community to identify and develop resources to not only help our members identify diverse partners, but also how to invest and support these partners to ensure long-term success.



photos- 1) SHINE Technologies employee pipetting lutetium-177, photo courtesy of SHINE, 2) Hard at work at Forward BIOLABS, photo courtesy of Forward BIOLABS, 3) GE Healthcare employee applies LEAN practices on manufacturing floor in Waukesha, photo courtesy of GE Healthcare, 4) Prepping samples at Forward BIOLABS, photo courtesy of Forward BIOLABS



Wisconsin's biohealth industry is ready & poised to represent the true innovation found in our region!



2

- **National Tech Hub Designation** – With the CHIPS and Science Act passing, there is an opportunity to gain Federal support through the Regional Technology and Innovation Hub program. BioForward is working with partners like UW-Madison and GE Healthcare on strategies to position Wisconsin for success when the application period is active. Wisconsin's biohealth industry is ready and poised to represent the true innovation found in our region.



GE HealthCare



School of Medicine
and Public Health
UNIVERSITY OF WISCONSIN-MADISON

- **Shared Lab Spaces** – Wisconsin is lacking in lab space for emerging growth companies to develop critical technologies. With the success of Forward BIOLABS, BioForward is excited to be exploring new opportunities to expand shared labs to new regions, like Milwaukee, and aid existing lab spaces in establishing flexible and efficient workspaces through discussion and collaboration.



- **Education** – BioForward believes strongly in the need to support the education of Wisconsin's students. We have partnered with many educational programs and institutions. This year we have supported the development of new STEM education programs and partnered with both Madison College and UW-Madison to strategize on the development of the next generation of biohealth workforce. BioForward also brought together representatives from multiple member companies to meet with UW-Whitewater, UW-Eau Claire, UW-Stout, and UW-River Falls on topics of collaboration and how to strengthen the talent pipelines between these excellent universities and our industry.



WISCONSIN
UNIVERSITY OF WISCONSIN-MADISON



MADISON
AREA TECHNICAL
COLLEGE



University of Wisconsin
Whitewater



UNIVERSITY OF WISCONSIN
RIVER FALLS

University of Wisconsin
Eau Claire



University of
Wisconsin-Stout
Wisconsin's Polytechnic University



4

Impact of Partnerships

BioForward recognizes that we need a strong community to create a strong biohealth industry. We are committed to investing in community partners, and supporting our members, big and small during **EVERY STEP OF THEIR JOURNEY.**



UPLIFTING COMMUNITY



CONNECTING TO INDUSTRY



Did you know?

BioForward advises programs, connects industry to educational resources, promotes and lobbies on behalf of Wisconsin Universities.

in WI Biohealth Industry



Did you know?

BioForward makes vital donations & sponsors organizations that provide STEM education or impact community health.

>\$22K

In donations & sponsorships
in 2022



Did you know?

a significant amount of BioForward staff time is committed to making connections between members and constituents to add value to membership!

\$34K

Awarded in grants through a partnership
between WEDC & BioForward to send 17
entrepreneurs to conferences



Did you know?

BioForward partners with many
community and state organizations
to support our entrepreneurs.



SUPPORTING EMERGING GROWTH COMPANIES



Impact of Talent & PR

Biohealth touches every corner of the state! Constituents in every district are working on behalf of the industry, whether in research and development, manufacturing, or logistics. A skilled workforce is essential to setting the industry up for success. At the request of the board of directors and our membership, BioForward promotes the industry and region and positions the industry for success through talent and public relations campaigns to bring added value to membership and grow the industry. Our efforts included:

- Career Center on BioForward's website
- Promotion of Medallion Member job listings
- Videos featuring testimonials of employees about why they love working at member companies
- Spotlight on biohealth member companies organized by industry category to showcase opportunities
- Dedicated Medallion Member pages highlighting company mission, values and culture to attract talent
- Extensive digital advertising to enhance the perception of Wisconsin and draw job seekers to our state
- Profiles promoting members on the BioForward website



BioForward added a series of virtual career fairs to bridge the gap that developed during the pandemic and utilize the industry's strength to make events attractive to prospective employers and employees.



"We are excited to offer these virtual career fairs to help our member organizations fill open positions and build their talent pipelines. Wisconsin is home to some of the world's most dynamic companies offering amazing opportunities with competitive salaries and benefits. Paired with the state's low-cost and high-quality of living, there is no better time to look at Wisconsin for a career in biohealth."

*Lisa Johnson, CEO, BioForward
Press release, May 10, 2022*



295

Career Fair Attendees



11M

Digital Impressions on
Awareness & Talent Ads



16

Member Profiles & Blogs



44

Published Local & National
News Stories

Impact of D.E.I.

While the physical health of individuals is important, so is the fervent need for diversity, equity, and inclusion to deepen our understanding of the communities we serve. Biohealth companies keenly understand the socio-economic disparities, environmental challenges, nutritional discrepancies, and unbalanced healthcare options facing individuals today and are committed to addressing these challenges. Our member companies are making meaningful interventions in these areas to lessen the gaps that divide us.

BioForward approached this goal from multiple fronts in this last year:

Annual Member Meeting Keynote Presentation-

Dr. Amy Kind, Founding Director for the UW-Madison Center for Health Disparities Research, introduced members to the Center, a unique research effort examining how an individual's environment and social circumstances affect their health to identify new therapies and interventions to eliminate health disparities.

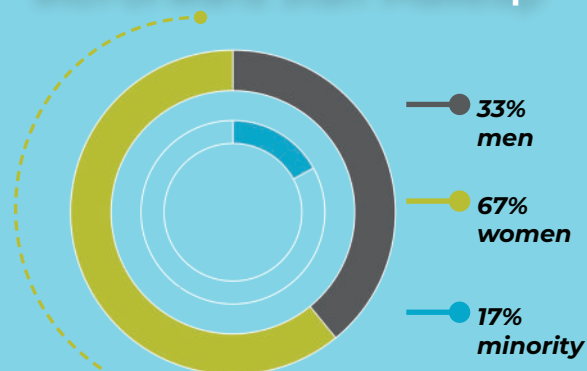


Closing session at the Wisconsin Biohealth Summit-

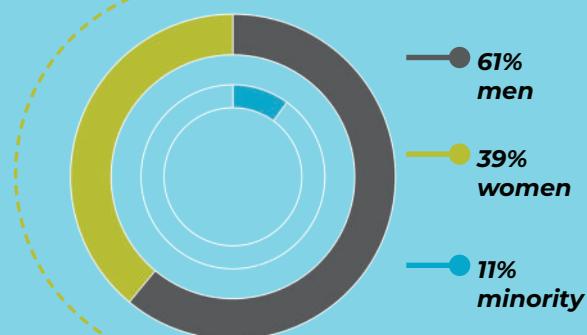
Embracing diversity & inclusion through action and operations to create a sustainable environment of belonging. Trish Peña, Director, Diversity, Equity, Inclusion & Community Outreach, Versiti, and Veronica Sandoval, Principal, Patient Inclusion & Health Equity, Genentech, presented their companies' diversity and inclusion initiatives and how these programs integrate into every aspect of their work. Attendees learned how to foster a work environment of belonging and engagement with additional insights into diversity in clinical trials, health equity, and connections to ESG (Environmental, Social & Governance) initiatives.



BioForward Staff Makeup



BioForward Board Makeup



Summit Speaker Makeup



**WI Women
in Biohealth**

9 WiB events

1 strategic session

Impact of Achievements

WISCONSIN BIOHEALTH AWARDS

One of BioForward's goals is to recognize scientific and business achievements in our community and how it impacts our lives. Since 2015, BioForward has had a tradition of recognizing notable scientific and business leadership and innovation that has helped Wisconsin become a top leader in health solutions. These distinctive awards have become the cornerstone of BioForward's signature event, the Wisconsin Biohealth Summit, and bring the community together to celebrate the achievements in the biohealth and life science industry.

Joining inaugural winners Bill Linton, the founder of Promega, and Hector F. DeLuca, who is well known for discovering the vitamin D-based endocrine system, the 2022 winners of the Hector F. DeLuca Scientific Achievement Award—Dr. James Cook, University Distinguished Professor in the Department of Chemistry & Biochemistry at the University of Wisconsin-Milwaukee, and the Wisconsin Biohealth Business Achievement Award—Dr. Nancy Kendrick, CEO of Kendrick Labs, were honored at the October 2022 Wisconsin Biohealth Summit hosted at the Overture Center for the Arts.



"BioForward Wisconsin is honored to announce and celebrate the achievements of this year's Wisconsin Biohealth Award winners. Both embody the meaning behind these awards due to their globally recognized research achievements and entrepreneurial support that have led to major medical advances in treating diseases and improving health outcomes. Their ingenuity, passion, and vision will be an asset to the Wisconsin biohealth industry for years to come."

*Lisa Johnson, CEO, BioForward
Press release, August 16, 2022*

SECOND ANNUAL BIOHEALTH COMMUNICATIONS COMPETITION

We recognize the importance of encouraging our state's young scientists on their professional journey.

In 2021, we started the Annual Biohealth Communications Competition to inspire graduate students and fellows to develop their communication and presentation skills. It was exciting to watch our dynamic student finalists discussing their transformational work. The 2022 winners were truly inspiring. They are the leaders of tomorrow!



1st- Vaidehi Patil
UW-Madison



2nd- Nathan Novy
UW-Madison



3rd- Mike Jindra
UW-Madison

Impact of Events

Each year, in one-on-one conversations with members, events and networking are cited as top values BioForward provides. It is easy to see why when they factor so strongly into community and collaboration. We can each feel siloed within our own departments or companies, but when given the opportunity to get out of the office, we share, exchange knowledge and ideas, and build a network. Seemingly small ideas can grow.

This very situation happened at the 2022 Wisconsin Biohealth Summit. Jay Hill, VP of Advanced Technology at GE HealthCare and prior board chair, was interested in organizing a theranostics panel for the event. The panel brought together SHINE Technologies, GE HealthCare, Accuray, UW-Madison School of Medicine and Public Health and Voximetry to discuss how there is a revolution underway in imaging-based therapies, right here in Wisconsin. The panel introduced many to theranostics, the greater area of medical physics, and the strength in our state.

The audience learned that Wisconsin is a hot spot for theranostic development and research because UW-Madison has the top-rated medical physics program in the world. Additionally, with a saturation of top companies focused on the treatment in a state with a talented workforce and good cost of living, Wisconsin is poised to make strides in this growing field.

Like all efforts, though, it can't be done alone. Jaime McCoy, General Manager of Theranostics and Radiotherapeutics at GE HealthCare, said, "it's clear that the innovation needed to continue to advance this field will not be possible by any single entity, institution or business. It's only going to happen by connecting with one another, which is fantastic in Wisconsin."

Following the Wisconsin Biohealth Summit, the group has continued to collaborate and grow.



BioForward has 4 signature events each year!

Wisconsin Biohealth Summit

- 550 Attendees
- Open to members & non-members
- Keynotes & panels on timely topics
- Wisconsin Biohealth Awards
- Networking
- Industry reception & Career Fair

Annual Member Meeting

- 350 Attendees
- Members-only
- BioForward update
- Industry presentation
- Networking with industry peers

End-of-the-Year Celebration

- 250 Attendees
- Members-only
- Food, fun, music, & games
- Networking with industry peers

Fisher Customer Appreciation

- 150 Attendees
- BioSavings members only
- Food, fun, & games
- Networking with industry peers



"SUCH a great meeting today!! It was my first big work gathering in 2+ years, and wow. The energy was amazing. I didn't realize how much I needed it! The biotech community is growing, BioForward is doing great – it's just exciting news all around!"

Emily Bauer, WARF
About Annual Member Meeting 2022

BioForward's 2022 Medallion Members

Thank you to our Medallion Members for your support of BioForward and
commitment to uniting and growing Wisconsin's biohealth industry.

Platinum



Gold



Silver



Bronze



BioForward Members

5 Lakes Institute
 Aberdeen Consulting
 Accuray
 Actalent
 Acumium
 AdvaMed
 Affiliated Engineers
 Agulos Biotech
 AHP Health Innovation
 AIQ Solutions
 Aldevron
 Alithias
 Alliant Energy
 Amgen
 Arrowhead Pharmaceuticals
 Atrility Medical
 Aurora Health Care
 Automated Logic
 Baker Tilly
 Bellbrook Labs
 BioCut Systems
 BioPharmaceutical Technology Center Institute
 BioSentinel Pharmaceuticals
 Biotechnology Innovation Organization
 Boldt
 BrainXell
 Bridge to Cures
 Bristol-Myers Squibb
 Broadwing Advisors
 BWBR
 Calimetrix
 Cascade Development
 Catalent Pharma Solutions
 Catalyst BioConsulting
 Cell Culture Company
 Cellscrip
 Cellular Logistics
 Center for Technology Commercialization
 CG Schmidt Construction
 City of Fitchburg
 Co-D Therapeutics
 Columbus Chemical Industries
 Commissioning Agents, Inc.
 Concordia University Wisconsin
 Consulate General of Canada
 CRB
 CZ Strategy
 DeWitt LLP
 Diverge Translational Science Laboratory
 DNAStar
 Domann-the Board Room
 Elephas
 Empirico
 Endsulin
 Epic Creative
 Eppstein Uhen Architects
 Estrigenix
 Eurofins Food Integrity & Innovation
 Exact Sciences
 Excelsior Labs
 Faith Technologies

Findorff
 First Business Bank
 Fisher Scientific
 Flad Architects
 FluGen
 Foley & Lardner
 Forward BIOLABS
 Fugent
 FUJIFILM Cellular Dynamics
 Function Therapeutics
 GE HealthCare
 Genentech
 General Capital
 GeneTel Laboratories
 GenScript ProBio
 Genturi
 Gilson
 GlaxoSmithKline
 GoDx
 GRAIL
 Gregor Diagnostics
 Hausmann Group
 HealthLX
 Hooper Corporation
 Horizon Therapeutics
 Hydrite Chemical
 Ideal Builders
 Illumina
 Imbed Biosciences
 IMEG Corp
 Immuto Scientific
 Innovenn
 International Flavors & Fragrances
 Intuitive Biosciences
 Invenra
 InvivoSciences
 ioGenetics
 Isthmus Engineering & Manufacturing
 Isthmus Project
 JangoBio
 JM Brennan
 Johnson & Johnson
 JP Cullen
 Kegonsa Capital Partners
 Kendrick Laboratories
 Kerry
 Kestrel Tellevate
 Kraemer Brothers
 Kraus-Anderson
 Labcorp
 Leo Cancer Care
 LGC, Biosearch Technologies
 Luminex- Diasorin
 Madison Development Corporation
 Madison EnvironmentalResourcing Inc.
 Madison Gas & Electric Company
 MadREP
 Mallinckrodt Pharmaceuticals
 Medical College of Wisconsin
 Merck and Co.
 Metabolon
 Microbial Discovery Group
 MilliporeSigma

Milwaukee School of Engineering
 Milwaukee Tech Hub Coalition
 Mirus Bio
 Morgridge Institute for Research
 Mortenson Construction
 MSAB Capital
 Neider & Boucher, S.C.
 Newfront
 Next Generation Clinical Research
 Nexus Pharmaceuticals
 North America Mechanicals, Inc.
 NorthStar Medical Radioisotopes
 Novartis Pharmaceuticals
 Object Pharma
 Octopi Brewing
 OnLume Surgical
 OpGen
 Park Bank
 PCI Pharma Solutions
 Pepper Construction Group
 Perkins Coie
 Pfizer
 PhRMA
 PPD
 Preservation Solutions
 Prevention Genetics
 Promega
 Promentis Pharmaceuticals
 PROMISS Diagnostics
 Propagate Health
 Protein Foundry
 PSC Biotech
 Public Affairs Company
 Quincy Biosciences
 RAMLOW/STEIN Architecture + Interiors
 RedFox AI
 Regenerative Medical Solutions
 Restaino & Associates
 Retham Technologies
 Riley Construction
 Rogers Behavioral Health
 RPRD Diagnostics
 Sanofi
 SARA Investment Real Estate
 Scarab Genomics
 Scientific Protein Laboratories
 SHINE Technologies
 SpectraMedEx
 Splash Clinical
 Stem Pharm
 Sterling Pharma Solutions
 Strand Life Sciences
 Strang
 Stratatech Corporation
 Supporting Strategies
 TCR Biotherapeutics
 Teel Plastics
 TeraMedica
 TESCHGlobal
 Thermo Fisher Scientific
 Third Wave Bioactives
 Tosoh Bioscience
 Total Water Treatment Systems

University Research Park
 US Bank
 UW Biotechnology Center
 UW Health
 UW-Extended Campus, MS in Applied Biotechnology
 UW-Madison, Advanced Materials Consortium
 UW-Madison, College of Ag and Life Sciences
 UW-Madison, Master of Science in Biotechnology Program
 UW-Madison, Office of Business Engagement
 UW-Madison, School of Medicine and Public Health
 UW-Milwaukee Innovation Accelerator
 UW-Milwaukee Research Foundation
 UW-Whitewater
 Varigen Biosciences Corp
 Vascugen
 Venture Investors
 Versiti
 Vertex Pharmaceuticals
 Vogel Bros. Building Co.
 Voximetry
 Vyndiant
 Waisman Clinical BioManufacturing Facility
 Waseen
 Westphal & Co.
 WiCell Research Institute
 Wisconsin Alumni Research Foundation
 Wisconsin Economic Development Corporation
 Wisconsin Startup Coalition
 Wisconsin Veteran's Chamber of Commerce
 WiSolve
 WisperBio, Inc.
 WiSys
 Women's International Pharmacy
 XLock Biosciences, LLC
 Xorbix Technologies
 Yahara Software
 Zurex Pharma



BioForward
— WISCONSIN

BIOFORWARD.ORG



**GET SOCIAL
WITH US**



MADISON

440 Science Drive, Suite 403
Madison, WI 53711
608.515.5432



MILWAUKEE

1225 Discovery Parkway
Wauwatosa, WI 53226
608.509.7295